

DRIVE SHAFT & AXLE

Hub Tools



MLK433918
Aluminum Wheel Hub Grinder - Trucks

- Special grinder used to clean the wheel rim contact surface, designed for vehicles with stud bolts
- Corrosion is removed quickly and easily
- Stud Grinder for Trucks
- 8-point
- Comes with 1-basic unit and 10 discs

⚠ WARNING: Cancer and Reproductive Harm - www.P65Warnings.ca.gov



MLK433618
Aluminium Wheel Hub Grinder - Type 2

- Special grinder used to clean the wheel rim contact surface, designed for vehicles with stud bolts
- For use on cars with studs
- Corrosion is removed quickly and easily
- Velcro and 8 points keep the disc inside the holder without turning
- Comes with 1 basic unit and 10 discs

MLK433502M
6" Wheel Hub Grinder Type 1 (1 Holder + 1 Disc)

- Special grinder for cleaning the wheel and hub contact surfaces
- Burned in corrosion residues are completely removed in a quick and easy process
- Actual process time per hub about 3 to 25 seconds depending on residue thickness



MLK433507
Inner Rim Cleaner

- Works easily with cordless drill or air drill
- Includes on base unit and one disc
- For optimal cleaning of the inner wheel contact surface
- Prevents corrosion related distortion of wheel bolt tightening torque and allows you to completely remove burnt in corrosion
- To be used only on the inside of an aluminum rim, particularly the inner area prior to wheel balancing

⚠ WARNING: Cancer and Reproductive Harm - www.P65Warnings.ca.gov



OTC6575-3
Hub Grappler™ Hydraulic Kit

- Simply install the supplied drive screw through the ram and Hub Grappler cross block and hook up shop air to the pump
- The Hub Grappler is now ready to hydraulically power out the most stubborn wheel bearings quickly and easily

Kit includes a through hole ram, air/hydraulic pump, 6' hose with couplers, drive screw and nut.

OTC7208A
Hub Remover

- Used to push the axle shaft from the front hub
- Includes a spare locknut, permits use with the 1177 slide hammer
- Weight: 2 lbs., 7 oz.
- Used for servicing front-wheel-drive cars



OTC6574
Universal Hub Puller HD with Plate

- Adjustable sliding legs can be positioned anywhere
- Wide range of 4" to 8"+ bolt circle
- Forged puller assembly with 1" drive screw capable of 20 tons of force
- Drive screw approved for use with an impact gun and can be struck with a hammer



⚠ WARNING: Cancer and Reproductive Harm - www.P65Warnings.ca.gov

OTC5085
Hub Oil Seal Puller

- Eliminates bearing and hub damage that can occur when a punch and hammer is used to remove the seal
- Extra long 28" handle provides leverage, unique pulling head design quickly and easily removes the seal in one piece
- Built from the highest quality heat treated steel
- Removes hub seals on trailer and truck axles, including truck steering axles



⚠ WARNING: Cancer and Reproductive Harm - www.P65Warnings.ca.gov

DRIVE SHAFT & AXLE

Hub Tools

OTC



OTC6575

OTC Hub Grappler™ Wheel Bearing Puller

- Used to service wheel hubs and bearings on the car
- New puller design increases applied force and rated for use with an impact gun
- Can be used on either the front or rear application
- Eliminates the need to re-align the vehicle
- New jaws are designed and sized to properly fit hub applications
- No need to remove steering components or knuckle



OTC6575-2

Hub Tamer™ to Grappler Update Kit

- The new jaws are designed and sized to properly fit hub
- Hub Grappler Application Guide included
- Includes the Hub Grappler Puller, 6 new adapters
- Kit includes everything to update the previous Hub Tamer Kit to the New Hub Grappler kit

WARNING: Cancer and Reproductive Harm - www.P65Warnings.ca.gov

OTC6575-1

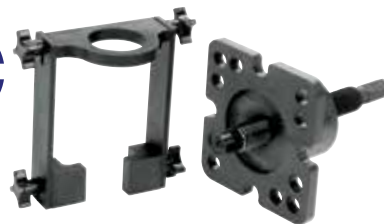
Hub Grappler Puller

- The new jaws are designed and sized to properly fit hub applications and can be quickly located on the puller bar without the use of fasteners
- The new 3/4" custom drive screw coupled with the special equalizer washer provides smooth operation while the proprietary heat treating extends its life 5-10 times longer than similar designs
- The new Hub Grappler Puller is specifically designed to apply maximum force with minimal effort from an impact gun to also minimize service time and improved design

WARNING: Cancer and Reproductive Harm - www.P65Warnings.ca.gov



OTC



OTC6576S

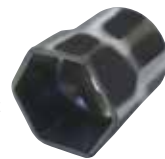
Dodge Hub Service Set

- Two methods of removal which includes removal of the hub with the aid of the power steering, and removal of hub with the aid of the Hub and Bearing Puller (included)
- Unique design makes this a one person operation to remove the hub with the bearing in tact
- 6576 fits Dodge 3/4 and 1 Ton 4WD 1994-Present applications
- 6577 fits Dodge 3/4 and 1 Ton 4WD 1994-Present applications
- Also fits GM and Ford 4WD Truck hubs

OTC6612

Heavy-Duty 54mm Hex Locknut Socket

- Feature a 1/2" square drive 54mm hex locknut socket designed for use on front wheel adjusting nuts found on Toyota FJ, LN, and RN models Can be used with an extension and torque wrench for accurate tightening



OTC8342

Hub Resurfacing Kit

- For most domestic and import vehicles with either front or rear disc brakes
- Includes holder and five sanding discs
- Run at speeds of 10,000 rpm or less for best results. (Do not exceed 10,000 rpm)



TMRMI982

2" Rotor and Hub Cleaning Tool Kit

- Works with Electric Drill
- Includes Hub Cleaner Tool, 2" Replacement Pads (10 pieces), and 2 replacement Velcro Rings
- Surface Prep Discs are made from Weaved Nylon with Grain - Medium Grit

TMRMI987

2" Replacement Pads for TMRMI982

- 10 pack of surface prep discs - medium grit
- 2 Velcro attaching pads included
- Use with TMRMI982



WARNING: Cancer and Reproductive Harm - www.P65Warnings.ca.gov

DRIVE SHAFT & AXLE

Hub Tools



LIS61850
5 Piece Truck Hub Seal Installer Kit

- Fits the Most Popular Size Seals for Class 7 and Class 8 Trucks
- The driver is designed to hold the seals to make installation easier
- Includes five drivers and handle extension for extra reach
- For driving seals on hubs with deep brake drums without removing the drums
- Fits trailers and some medium duty trucks

WARNING: Cancer and Reproductive Harm - www.P65Warnings.ca.gov



TIG90150
Heavy Duty King Pin Press

- Remove king pins in minutes with relative ease and efficiency. The patented design of the 90150 King Pin Press weighs 75% less than our closest competitor and requires only one operator to use
- Three different forcing screw options are included, providing the technician the ability to service everything from 3/4 ton pickups to Class 8 trucks. A shortened 1 1/4" forcing screw allows you to access king pins in the tightest wheel wells - even on buses
- Our three most popular tie rod end removers are also included: 10301, 10302 and 10304
- Application: for use on straight and tapered king pins from 7/8" to 2 5/32"
- Isuzu NPR and GMC/Chevrolet W-series trucks require a custom adapter: 90150-15. Not compatible with FL981 axles where the tie rod is cast to the spindle



PBT70970
Hub Clamp Expander

- Allows easy removal and installation of struts and ball joints
- Interchangeable spreaders prevent damage to aluminum or cast iron hubs
- Adjustable for use on hubs with centralized or non centralized slot
- Suits domestic and import vehicles
- Allows on vehicle repair



LTILT830A
Universal Hub Shocker Puller

- Redesigned cutout for all five-six-eight lug applications
- Stronger mounting holes
- 3/4" heavy duty steel back plate
- Flanged nuts for improved safety and performance
- 1/4" square tubing, 1/4" striking plate

DRIVE SHAFT & AXLE

Locknut & Specialty Sockets



KTI71920

Locknut Socket Set, 7 Piece, 1/2" Drive

- Easily remove and install wheel bearing locknuts
- Includes hex and rounded hex sockets
- Packaged in a blow molded case
- Sockets are also available individually

Includes these locknut sockets: 55 mm hex; 2-3/8" hex; 2-1/2" hex; 2-1/2" rounded hex; 2-3/4" rounded hex; 2-9/16" rounded hex; and 2-3/8"

KTI71921 - Locknut Socket 55mm Hex

KTI71922 - Locknut Socket 2-3/8" Hex

KTI71923 - Locknut Socket 2-1/2" Hex

KTI71924 - Locknut Socket 2-1/2" Rounded

KTI71925 - Locknut Socket 2-3/4" Rounded

KTI71926 - Locknut Socket 2-9/16" Rounded

KTI71927 - Locknut Socket 2-3/8" Rounded

WARNING: Cancer and Reproductive Harm - www.P65Warnings.ca.gov

SUNEX[®]

TOOLS



SUN2847

7 Piece Wheel Bearing Locknut Set

- For use with 1/2" ratchet or breaker bar
- Will provide the sockets needed to handle most popular applications

Set includes sizes: rounded hex: 2-3/8", 2-1/2", 2-9/16", 2-3/4"; 6 point hex: 2-3/8", 2-1/2" and 55mm.

OTC



OTC4542

7 Piece Wheel Bearing Locknut Socket Set

- For use with a 1/2" ratchet or breaker bar
- Sockets will work on a variety of automobile manufacturers

Set includes: hex locknut sockets 55 mm, 2-3/8" and 2-1/2" rounded hex locknut sockets 2-1/2", 2-3/4", 2-9/16" and 2-3/8"

DRIVE SHAFT & AXLE

Locknut & Specialty Sockets



GRE8370

3/4" Drive 7 Piece Truck Pinion Locknut Set

- Extra-thin wall deep length impact sockets for removing/ installing transmission and differential end yoke locknuts
- Can be used on a wide variety of trucks
- Packaged in a metal case
- Lifetime Warranty
- Use caution and follow the manufacturer's recommendations when servicing these parts

Set includes: 2", 2-1/8", 2-1/4", 2-3/8", 2-1/2", 2-5/8" and 2-3/4".

SUNEX[®] TOOLS



SUN4667

7 Piece 3/4" Drive Truck Pinion Locknut Impact Socket Set

- For removing or installing transmission and differential end yoke lock nuts on most trucks
- Forged from chrome molybdenum alloy steel
- Packaged in a heavy duty blow molded case
- Fully guaranteed



Set includes: 2", 2-1/8", 2-1/4", 2-3/8", 2-1/2", 2-5/8" and 2-3/4".

⚠ WARNING: Cancer and Reproductive Harm - www.P65Warnings.ca.gov



SUN2838

4 Piece 1/2" Drive Deep Spindle Nut Impact Socket Set

- Deep design for GM and Chrysler spindle nut applications
- Forged from the finest chrome molybdenum alloy steel – the best choice for strength and durability
- Fully guaranteed
- Packaged in a heavy duty bow molded case

Set includes:

SUN2800 - 30mm

SUN2832 - 32mm

SUN2834 - 34mm

SUN2802 - 36mm

GW GEARWRENCH[®]



KDT41650

Axle Nut Service Kit

- 7 extra long 1/2" Drive 6 point metric sockets are ideal for heavy duty use in removing and installing axle nuts
- Use with a ratchet, breaker bar, impact wrench, or torque wrench
- Includes: 29, 30, 32, 34, 35, 36, and 38mm
- Packaged in a blow molded case with laminated instruction cards or stickers integrated into case design for handy reference of application information

Applications: 30mm Axle Nut Socket - services GM body styles A, J, and N, plus Asian imports 36mm Axle Nut Socket - services many GM, Ford, and Chrysler full-size vehicles 32mm Axle Nut Socket - services late model Honda and Chrysler vehicles 34mm Axle Nut Socket - services many GM mid-size vehicles 29mm Axle Nut Socket - services late model GM, Ford, and Asian imports 35mm Axle Nut Socket - services many GM vehicles 38mm Axle Nut Socket - services various full-size vehicles including SUVs

⚠ WARNING: Cancer and Reproductive Harm - www.P65Warnings.ca.gov



KDT41660

Spindle Nut Service Kit

- 1/2 in. drive sockets used for most 4WD SUV and light truck axle locknut applications
- Off corner loading on drive pins for increased strength
- Use with a torque wrench, ratchet, or breaker bar
- Made of chrome vanadium steel
- Packaged in a blow molded case with laminated instruction cards or stickers integrated into case design for handy reference of application information

DRIVE SHAFT & AXLE

Locknut & Specialty Sockets



KDT2467

Octagon Spindle Nut Wrench 3-7/8"

This four-lug wrench removes spindle nuts on 1/2-ton 4-wheel-drive vehicles. Use with 1/2" square drive tool. Wrench fits spindle nut on Chevy, 1/2-ton GMC, Blazer, Bronco, Bronco 11, Ranger, Explorer, 1/2- and 3/4-ton Ford, spline-type hub, IHC 1100 series and 1/2-ton Dodge vehicles. Will work on Ford vehicles with ratcheting type lock nuts on front axle.



KDT2770

4 Wheel Drive 1/2" Square Drive Spindle Nut Wrench

- Outer diameter: 2.60"; Inner diameter: 2.23"
- Length: 2.94"
- Inside depth: 2.375"



Used for the following applications: 1973-1981 GM 3/4 and 1 Ton 4WD trucks; 1978-1984 Ford F250-350 Trucks; 1984-1992 Ranger, Bronco with manual hubs; 1990-1993 Dodge Trucks with Dana 44.

KDT3246

Ford F250/350 Trucks Spindle Nut Wrench

- Length: 3.24"
- Outer diameter: 2.63", Inner diameter: 2.27"



Use with 1/2" square drive tool. Will work on Ford vehicles with ratcheting type lock nuts on front axle. Ford F250 heavy-duty axles, 1985 to current models; F350 heavy-duty axle 4 x 4, 1985 to current models; and 1987 Chevy 30 Series along with DANA 501FS and model 60 mono-beam axles. This is not to be used with power tools.

KDT3195

Ford F250/350 Trucks Spindle Nut Wrench

- Use on 1985 to current Ford F250-350 with Dana 80 rear axle, and 10-1/4" ring gear
- Use on 1987 E350 to current with Dana 80 rear axle and 10-1/4" ring gear
- Use on 1988 to current F super duty with Dana 80 rear axle and 10-1/4"
- Use with 1/2" square drive tool



WARNING: Cancer and Reproductive Harm - www.P65Warnings.ca.gov



1/2" Drive Spindle Nut Socket

- Heat treated, chrome plated, chrome vanadium
- 6 point deep • Carded



KT128229 - 29mm

KT128230 - 30mm

KT128230 - 30mm

KT128234 - 34mm

KT128235 - 35mm

KT128236 - 36mm

WARNING: Cancer and Reproductive Harm - www.P65Warnings.ca.gov



CTA1083

Ford Transit Rear Hub Nut Socket

- Heavy-Duty 4 point specialized impact socket for removing the rear hub nut on RWD Ford Transit
- The alignment shaft allows accurate placement onto the castle nut
- Services 2014 & up Ford Transit vehicles
- Comparable to Ford Factory Tool #205-1007



OTC1929

2-5/8" Bearing Locknut Spanner Wrench

- Six lug, spanner-type wrench removes and installs rear wheel bearing locknuts
- Built for use with a 3/4" square-drive ratchet or breaker bar
- Wrench for servicing Chevrolet and GMC 5,200 and 7,200 lb. axles



OTC1930

2-7/8" Bearing Locknut Spanner Wrench

- Built for use with a 3/4" square-drive ratchet or breaker bar
- Wrench for servicing Chevrolet and GMC 11,000 to 13,500 lb. axles



OTC1931

3-5/8" Tubular Spanner Wrench

- Six lug, spanner-type wrench removes and installs rear wheel bearing locknuts
- Built for use with a 3/4" square-drive ratchet or breaker bar
- Wrench for servicing Chevrolet and GMC 15,000 lb. axles; 17,000 lb. 2 speed axles; 15,000 lb. trailing axles



DRIVE SHAFT & AXLE

Locknut & Specialty Sockets



AXLE/LOCK NUT SOCKETS

Size	6 PT		8 PT		
	1/2" Drive	3/4" Drive	3/4" Drive		
1-11/16"	OTC6006				
2-3/32"		OTC1901 KAS1201 INT18501			
2-1/4"	OTC7157	OTC1920 KAS1220 INT18520			
2-3/8"	OTC6936	OTC1902 KAS1202 INT18502	OTC1903 KAS1203 INT18503		
2-3/8"		OTC1936 KAS1236 INT18536			
2-1/2"	OTC6921 OTC6795 OTC7158	OTC1921 KAS1221 INT18521			
2-9/16"	OTC6928	OTC1904 OTC1928 KAS1204 KAS1230 INT18504 INT18528	OTC1905 KAS1205 INT18505		
2-5/8"		OTC1922 KAS1222 INT18522			
2-3/4"	OTC6601 OTC6796 OTC7269 OTC7796	OTC1923 OTC1937 KAS1223 INT18523 INT18537	KAS1244		
2-13/16"		KAS1227			
2-7/8"		OTC1932 KAS1232 INT18532	OTC1933 INT18533		
3"		OTC1906 KAS1206 INT18506	OTC1907 KAS1207 INT18507		
3-1/8"		OTC1934 KAS1234 INT18534	OTC1935 KAS1235 INT18535		
3-1/4"		OTC1908 KAS1208 INT18508	OTC1909 KAS1209 INT18509		
3-3/8"			OTC1924 KAS1225 INT18524		

vehicle | SPECIALTY

WARNING: Cancer and Reproductive Harm - www.P65Warnings.ca.gov



KT128202

Center-Lock Nut Socket for Porsche


- Center-lock nut socket 3/4" drive for Porsche
- Models: 997, 991, GT2 and GT3
- Drop forged body
- 3/4" drive tightening torque, maximum 369 ft/lbs (500 Nm)
- Do not use with impact ratchet or impact wrench



DRIVE SHAFT & AXLE

Locknut & Specialty Sockets

AXLE/LOCK NUT SOCKETS						
Size	6 PT			8 PT		
	1/2" Drive	3/4" Drive		3/4" Drive		
3-1/2"		OTC1910 INT18510	KAS1210	OTC1911	KAS1211	INT18511
3-3/4"		OTC1926 INT18526	KAS1228	OTC1925	KAS1226	INT18525
3-13/16"				OTC1927	KAS1229	INT18527
3-7/8"		OTC1912 INT18512	KAS1212	OTC1913	KAS1213	INT18513
4"		OTC1914 INT18514	KAS1214			
4-1/8"		OTC1915 INT18515	KAS1215	OTC1940	INT18540	
4-3/16"				OTC1941	INT18541	
4-3/8"		OTC1916 INT18516	KAS1216	OTC1917	KAS1217	INT18517
4-7/8"		OTC1918 INT18518	KAS1218	OTC1919	KAS1219	INT18519
4-1/2"				OTC1938	KAS1239	INT18538
5-1/4"				OTC1939	INT18539	
30MM	LIS39500	KDT3161				
32MM	LIS39700	KDT3270				
34MM	LIS39750	KDT3449				
36MM	LIS39550					
54MM	OTC6612	OTC7612	KAS1231			
59MM			KAS1238			

 **WARNING:** Cancer and Reproductive Harm - www.P65Warnings.ca.gov



KT128201

Toyota Front Hub Nut Socket

- Drop forged body
- For the removal and installation of the front hub lock nut
- Applications include: 2007 -2014 Toyota 4 Runner, 2WD, Tundra and 2008-2014 Toyota Sequoia
- Similar to Toyota factory tool #09318-12010-8PIN & 09602-60010

 **WARNING:** Cancer and Reproductive Harm - www.P65Warnings.ca.gov



**ASSENMACHER
SPECIALTY TOOLS**
ASTTOOL.COM



ASSTOY288

Toyota Front Hub Nut Socket

- Comparable to Toyota Factory Tool # 09318-12010-8 Pin
- Comparable to Toyota Factory Tool # 09602-60010
- R & R of the Front Hub Lock Nut on Toyota Trucks (2WD) 2007-newer

Applications included: 2007 - 2014 Toyota - 4Runner 2WD 2008 - 2014 Toyota - Sequoia 2007 - 2014 Toyota - Tundra

DRIVE SHAFT & AXLE

Axle Tools



SCH14200
Universal C-Clip Remover

- Remove axle/u-joint c-clips with pneumatic hammer
- Remove front & rear wheel drive axle u-joint c-clips
- Remove 4 wheel drive axle u-joint c-clips
- Pneumatic hammer drives c-clip out of rusty, dirty u-joint cap grooves
- Made of durable 4130 heat treated steel for long life

⚠ WARNING: Cancer and Reproductive Harm - www.P65Warnings.ca.gov



OTC1266
Adjustable Gland Nut Wrench

- Designed to fit hydraulic cylinders on most farm and construction equipment
- Fits gland nuts from 2" to 6" diameter pin to pin
- Reversible to fit 1/4" and 5/16" diameter pinholes
- Accommodates a 3/4" drive ratchet or breaker bar



CTA8600
Adjustable Gland Nut Wrench - Small

- Fits hydraulic cylinders with gland nuts from 1" to 3-3/4" (25 - 95mm)
- Reverses to work on 1/4" - 7/32" pinholes
- Use with 1/2" square drive tools

CTA8605
Adjustable Gland Nut Wrench - Large

- For hydraulic cylinders with gland nuts from 2-6" / 51-152 mm (pin to pin)
- Reverses to work on 17/64" or 21/64" pinholes
- Use with 3/4" square drive ratchet or breaker bar



LIS12800
Master Pneumatic Bearing Race and Seal Driver Set

- This master set contains 11 drivers to fit automobiles and trucks up to 1 ton
- Includes two handles, one for hammering and one for use with an air hammer
- The drivers can be used on both bearing races and seals
- All set contents are packaged in a blow molded case
- The set weighs 6 lbs. 11 oz.

Sizes include: 1.565, 1.750, 1.965, 2.325, 2.555, 2.830, 2.995, 2.470, 4.625, 3.813 and 3.180. To add the pneumatic handle to your current set order a LIS12820 pneumatic driver.



LIS59400
Pinion Bearing Race Driver Set

- Set includes 8 drivers for driving inner and outer pinion bearing races
- For use on 1/2 and 3/4 ton Ford, Dodge and GM pickups
- Use the extended two-piece handle for driving rear pinion bearing races
- A pneumatic handle is also included for use with an air hammer

Sizes include: 2-11/16" 2-27/32", 2-7/8", 3", 3-1/4", 3-1/2", 3-3/4", 4-1/8"

⚠ WARNING: Cancer and Reproductive Harm - www.P65Warnings.ca.gov

DRIVE SHAFT & AXLE

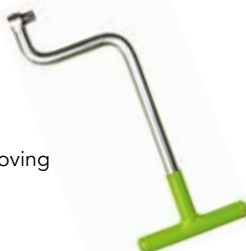
Axle Tools



LIS61900

Heavy Duty Bearing and Seal Driver

- Fits most class 8 over the road trucks and trailers and some medium duty trucks
- Use the tapered driver side for bearing races and the flat side for seals. Includes six drivers and handle extension for driving bearing races and seals on hubs with deep brake drums without removing the drums
- Driver sizes: 3-43/64", 4-7/8", 4-13/16", 5-1/2", 5-25/32" and 6"



MLK512712

Alignment Wrench Mercedes

- Rear axle alignment for Mercedes
- Adjust the rear axle toe without removing the plastic underbody cover
- Avoids breaking plastic clips/screws
- Saves time



CTA8065

Large Bearing Splitter

- Removes generator gears, bearings, bearing cones and similar parts where ordinary puller jaws will not reach
- May be used with CTA Gear Puller No. 8015 and 8020
- Features forged separators with knife edges to minimize damage to parts
- Range: 0 -4-1/4" (0-108mm)

WARNING: Cancer and Reproductive Harm - www.P65Warnings.ca.gov



KITI70380

Rear Axle Bearing Puller Kit

- Make easy work of removing semi planting rear axle bearing
- Set includes three sizes to service most domestic cars

WARNING: Cancer and Reproductive Harm - www.P65Warnings.ca.gov

KITI70383

Bearing Separator, 1" to 2-1/4"

- Removes generators gears, bearing cones, bearings and similar parts that puller jaws cannot reach
- Designed to reduce risk of damage to part
- Flush knife-edge blades get behind work where most puller jaws cannot fit or grip
- Manufactured with high quality, heat-treated steel
- Spread: 0" to 2-1/4"; threaded holes: 3/8" - 16"

WARNING: Cancer and Reproductive Harm - www.P65Warnings.ca.gov

KITI70384

Reversible Puller and Bearing Separator, 1" - 4-1/4"

- Spread: 0" -4-1/4"

WARNING: Cancer and Reproductive Harm - www.P65Warnings.ca.gov

KITI70382

Bearing Separator, 0" to 4-1/4"

- Remove generator gears, bearing cones, bearings and other similar parts that puller jaws cannot reach
- Threaded holes are 5/8" - 18
- Can be used with KITI70312

WARNING: Cancer and Reproductive Harm - www.P65Warnings.ca.gov



OTC7494A

Rear Axle Bearing Puller Set

- Redesigned to make the removal of semi-floating rear axle bearings easier
- New design allows you to capture the bearing firmly, distributing the pulling force over the entire bearing
- Includes three pullers to service most domestic cars
- Use with OTC1155 or 1156 slide hammer with 5/8" - 18 UNF thread
- Set includes three pullers: 1 to 1-7/8", 1-5/16" to 2-3/8", 1-3/8" to 2-7/8"

DRIVE SHAFT & AXLE

Axle Tools

SUNEX[®]

TOOLS



SUN185026

1/2" - 9" Bearing Splitter

- Splitter halves made of forged steel
- Sharp Angled edges allow user to get between tightly assembled parts
- Zinc plated Splitter halves inhibit rust
- Splitter halves include threaded holes for the acceptance of pushing/pulling attachments
- Black oxide coating on screw portion inhibit rust
- Amerequip™ bearing splitters are made of forged steel and coated to maximize the life of the tool. The sharp leading edge of the splitters help get in between tight areas.



LIS12980

Bearing and Seal Installer Master Set

- Set includes 9 drivers
- Helps reduce damage to both race and axle housing
- Make it easier to insert bearings with this master set. This master set includes nine discs sizes to fit most standard wheel bearings. It's simple to use, it simply turns discs over to drive seals. Made with the quality and durability to last!

⚠ WARNING: Cancer and Reproductive Harm - www.P65Warnings.ca.gov



KAS2577

8 Piece Floating Axle Housing Thread Restorer Kit

- Aids in the servicing of front and rear floating axle housings on sport utility vehicles, light and medium duty trucks and vans
- Contains seven thread restorer dies and one driver socket to refurbish damaged or corroded spindle threads
- Spindle driver enables the technician to easily use individual thread restorers with a standard 1/2" drive ratchet wrench
- Application chart provides quick thread restorer die identification per vehicle

⚠ WARNING: Cancer and Reproductive Harm - www.P65Warnings.ca.gov

vehicle | SPECIALTY



TIG11001

Axle Shaft Puller

- Fully adjustable pulling arms and stud adapters are quick and easy to install
- Includes most common 5/8" - 18 Axle Stud Adapter Set; additional adapter sets also available
- Reduces the risk of damage to axle studs



Bearing Splitters

- Features "knife-like" edges which are easily placed behind the part to secure a gripping surface, even when clearances are extremely limited
- When used with an OTC Grip-O-Matic® puller, puller jaws grip attachment's outer edge; when used with a Push-Puller, puller legs are threaded into the attachment's two tapped holes



Part Number	Max Spread	Min Spread	Application (use with puller numbers)
OTC1121	15/16"	1/4"	OTC1020, OTC1022, and OTC1023
OTC1122	2"	1/8"	OTC1024, OTC1025, OTC1026, OTC1027, OTC7392 and OTC7393
OTC1123	4-5/8"	1/2"	OTC1035, OTC1036, OTC1037, OTC1038 and OTC927
OTC1124	5-3/4"	1/2"	OTC1035, OTC1040, OTC1041, OTC1042, OTC1065, OTC1063 and OTC938
OTC1130	9"	1/2"	OTC1035, OTC1040, OTC1041, OTC1042, OTC1065, OTC1063 and OTC938

⚠ WARNING: Cancer and Reproductive Harm - www.P65Warnings.ca.gov

DRIVE SHAFT & AXLE

Axle Tools

OTC



OTC6695

Ford Axle Shaft Seal Installer

- Works on 1998 - 2004 Ford F-250, F-350, F-450, and F-550 4 x 4's having the vacuum-operated front axle
- Correctly installs the seal onto the axle shaft and into the wheel knuckle,
- Prevents front hub vacuum leaks that would cause the 4WD to not engage

OTC6697

Ford Axle Shaft Seal Installers

- Correctly installs the seal onto the axle shaft and into the wheel knuckle, preventing front hub vacuum leaks that would cause the 4WD to not engage
- Works on 2005-newer Ford F-250, F-350, 4X4s having the vacuum-operated front axle



OTC6698

Ford Axle Shaft Seal Installers

- Works on 2005-newer Ford F-450, F-550, 4X4s having the vacuum-operated front axle



OTC7077

Axle Stud Cone Pliers

- Now you can easily remove the tapered cone from studs used on medium- and heavy- duty truck rear axles
- This specially designed pliers gives you the leverage needed to expand the cone and remove it from the stud for axis removal



OTC09521-25011-01

Rear Axle Puller - Toyota

- T100, 4 Runner, Sequoia, LandCruiser, Tundra, Tacoma, Lexus, as well as select Nissan Mitsubishi and Izuzu models.
- Used to Pull the Front Axle Shaft Bearings in Toyota Trucks
- Used with 09521-25023-01.
- 09521-25011-01 Rear Axle Shaft Bearing Puller

OTC



OTC7057

U-Joint Remover Tool Set

- Works on 16N, 17N, 18N and 1710 series U-joints and spicer 1600-1610 to 1180 series U-joints
- Includes plastic storage box, No 1036 2-jaw puller and instructions
- Weight: 16 lbs., 3 oz

The service tool removes even the most rusted and corroded bearings easily and mechanically, without damage to costly U-joint components, even where the space is limited. It applies up to 7 tons of force to separate the yoke assemblies and remove bearings the right way. Far superior to sledgehammer methods.

SUNEX[®]

T O O L S



SUN212ZUMDL

Ford Driveline Socket - 12mm Universal Impact Socket For U-Joints

- 12mm 12 Point Universal Impact Socket, 4-9/16" long
- Forged from the toughest steel, chrome molybdenum alloy
- Universal design makes it easier to work with
- Lifetime warranty



Will work on the following Ford models - Mustang, Crown Victoria, Taurus, Expedition, Excursion, Explorer, Ranger, F150 and all Mercury equivalents from 1980's to the present. It is not applicable for F250 and larger super duty trucks.

DRIVE SHAFT & AXLE

Axle Tools

OTC



OTC4295
10 Piece Bearing Race and Seal Set

- Permits installation of tapered bearing races and seals without damage to the component or housing
- Tapered side of driver is used to install races
- Invert the driver to the flat side to install seals

Includes: Driver handle with bolt, plus these tool sizes: 1.565", 1.750", 1.965", 2.325", 2.470", 2.555", 2.830", 2.995", and 3.180"

OTC7248
U-Joint Removing Installing Tool

- Tool uses a forcing screw press to safely remove and replace automotive universal joints with needle bearings, including GM plastic pin CV U-joints



WARNING: Cancer and Reproductive Harm - www.P65Warnings.ca.gov



OTC4507
10 Piece Bearing Race and Seal Set

- Permits installation of tapered bearing races and seals without damage to the component or housing
- Tapered side of driver is used to install races
- Invert the driver to the flat side to install seals
- Set is housed in a blow-molded plastic storage case
- Weight 4lbs. 2oz.

Includes: Driver handle with bolt, plus these tool sizes: 1.565", 1.750", 1.965", 2.325", 2.470", 2.555", 2.830", 2.995", and 3.180"

OTC



OTC5190A
Heavy Duty U-Joint Puller

- Designed to fit all Class 7 and 8 trucks including a wide variety of drive-lines from Spicer and Meritor
- Improved material and heat treat on major components
- Larger diameter threaded shaft
- Improved strength and durability
- Compatible with: Spicer 1610, 1710, 1760, 1810, 1880, SPL 140, 170, 250. Meritor 16, 17, 18N, 1710, RPL20, 25

Can handle U-joints that are severely seized and require higher force to pull and install, tool will last longer thereby reducing tool replacement costs.

WARNING: Cancer and Reproductive Harm - www.P65Warnings.ca.gov

OTC7490
U-Joint Remover Tool
1/2" Drive

- The pullers legs have holes for bolt storage
- Bolts included: 5/16"-24 x 1 1/2", 3/8"-24 x 1-1/2", 7/16"-20 x 1-1/2", M8-1.25 mm x 35 mm
- Works on most Dana Spicer and Meritor U-Joints - Except the Spicer Life series model SPL250X



OTC4505
19 Piece Bushing Driver Set

- Enables you to remove and install bushings ranging from 3/8" to 1-3/8" in diameter, as used in cars, trucks, tractors, construction equipment, electric motors, and many other components having bushings
- Housed in a blow-molded storage case
- Weight: 3lbs 3oz

DRIVE SHAFT & AXLE

Axle Tools



AST7824

Bearing Race and Seal Driver Master Set

- Easier to insert wheel bearing race and seals without damage to race and axle housing
- Set includes nine disc sizes to fit most standard wheel bearings
- Turn discs over to drive seals
- Blow molded case for easy storage and transport

Set includes the following parts:

- | | |
|--|---------------------|
| No. 1 - Size 1.565" | No. 2 - Size 1.750" |
| No. 3 - Size 1.965" | No. 4 - Size 2.325" |
| No. 5 - Size 2.470" | No. 6 - Size 2.555" |
| No. 7 - Size 2.830" | No. 8 - Size 2.995" |
| No. 9 - Size 3.180" | |
| No. 10 - drive handle with flange hex bolt | |



WARNING: Cancer and Reproductive Harm - www.P65Warnings.ca.gov

AST78100

Goliath Ball Joint XL C-Frame Press

- Large ball joint press for max clearance and easier use of tall and stacked adapters
- Includes both long and short drive screws to maintain a shorter overall working length when desired
- Features 3X the throat space and includes a notched foot that allows for pressing out ball joints without removal of top mount grease fittings
- Astro's new forged alloy steel
- 9.1" throat, 11.9" length

WARNING: Cancer and Reproductive Harm - www.P65Warnings.ca.gov



AST78825

Master Front Wheel Drive Bearing Adapter Kit

- Includes heavy duty grade 7/8" grade 8 drive bolt for twice the durability of the industry standard
- Replace wheel bearings without the need for alignment after by keeping the strut assembly and steering knuckle in place during service
- Master set for a wide range of applications
- Hardened washers for repeated use and longer life
- Black phosphate coating for a more durable finish

WARNING: Cancer and Reproductive Harm - www.P65Warnings.ca.gov



DRIVE SHAFT & AXLE

CV Joint & Boot Tools



LIS30500

CV Boot Clamp Pliers for Earless Type Clamps

- For earless-type clamps
- A sturdy, low-cost tool
- Works on earless-type clamps including those found on GM inboard CV joints

WARNING: Cancer and Reproductive Harm - www.P65Warnings.ca.gov



LIS30800

CV Boot Clamp Pliers for Ear Type Clamps

- For all ear-type clamps including GM FWD outboard CV joints
- Designed for use with a torque wrench, as required for stainless steel bands

WARNING: Cancer and Reproductive Harm - www.P65Warnings.ca.gov



KDT3191

CV Joint Boot Clamp Tightening Wrench

- 11.5" in length
- Use wrench to securely fasten band-it style free end clamps, roll band and clips or band-it Jr. style preformed CV boot clamps
- The mandrel tightens the clamp, holding it in place until the ears of the clamp are folded down

This wrench is used to securely fasten band-it style free end clamps, roll band clips or pre-formed CV boot clamp. The tool is used by turning the winding mandrel with a wrench. The mandrel tightens the clamp, holding it in place until the ears of the clamp are folded down.



DRIVE SHAFT & AXLE

Slide Hammers & Pullers



KT170510 Slide Hammer Pull Kit

- Easily removes flange-type axles, oil seals, bearings and other press fit parts
- Package in blow molded case

Kit includes: 5 lb. slide hammer; 8-function/3-jaw puller; 2-jaw puller; puller hook; rear axle puller; dent puller; and grip wrench adapter

WARNING: Cancer and Reproductive Harm - www.P65Warnings.ca.gov



KT170520 10 Way Puller Set

- 5 pound slide hammer puller set with various jaws and attachments allowing for 10-way internal or external jobs
- Jaws can be setup for 2 or 3 way pulling: (3) 2-3/8" pulling jaws, (3) 3-1/4" pulling jaws, (3) 6-1/2" pulling jaws
- Grip wrench adapter threads into slide hammer with 5/8" - 18 thread and threads onto a 7/16" - 14 thread adapter for pulling use
- Rear axle pulling attachment, front hub puller assembly, dent puller and puller hook attachment
- All contents of set come in a convenient plastic, blow-molded carrying/storage case

WARNING: Cancer and Reproductive Harm - www.P65Warnings.ca.gov



KT170356 Pilot Bearing Slide Hammer

- Center rod spreads forged steel jaws, pushing them out against the bearing for quick and easy removal of bearings and other parts located in tight spaces
- Spread: 1/2" - 1-1/2"



KT170355 Pilot Bearing Puller

- Use to remove fly wheel pilot bearings up to 7-1/2" long in tight spaces where a slide hammer just won't fit
- Versatile tool also works as a bearing and bushing puller for generators and starters
- Spread: 1/2" to 1-1/2" I.D.



WARNING: Cancer and Reproductive Harm - www.P65Warnings.ca.gov



TIG10803 Heavy Duty Yoke Puller Kit

- Simplifies and expedites removal of heavy duty yokes on drive shafts, transmissions & rear-end differentials without damage to components
- Works with 1/2" impact wrench
- Services Rockwell, Spicer & Meritor



OTC7070A Transmission Bearing Service set for Fuller Trucks

- Removes end yokes from 1600/1610-1810 series transmissions
- Puller device delivers 10 tons of mechanical power of essential force for working on big gear boxes
- Works on Fuller twin-countershaft transmissions

DRIVE SHAFT & AXLE

Slide Hammers & Pullers



Use 21st century air hammer pulling power to get the job done Safe, Fast and efficient instead of a slow, manually powered 19th century slide hammer.



LTILT855A Texas Twister

- Converts air hammer into a pneumatic slide hammer
- One hand operation
- Safe controlled part removal without parts and fluids crashing to the floor
- New Puller Connector - 1/2" - 20 to 5/8" and 1/2" - 20 to 3/4" to connect Texas Twister to your 5/8" and 3/4" slide hammer bits and pullers

WARNING: Cancer and Reproductive Harm - www.P65Warnings.ca.gov



KDT41700 10 Way Slide Hammer Puller Set

- Kit provides a wide range of puller applications such as flange-type axles, oil seals and other press fit parts
- Jaws can be set up for 2 or 3 jaw internal or external pulling jobs

WARNING: Cancer and Reproductive Harm - www.P65Warnings.ca.gov



SGT81100 The Slugger, Heavy Duty Slide Hammer in a Tool Box

- Perfectly designed for the toughest repair applications
- 10 lb. slide weight designed for in-line impact
- Balanced for continued use without fatigue
- Special hand-fit weight for ease of work
- Packed in a handy metal tool box which can be locked
- An assortment of the most widely used Slugger parts packed in a handy metal tool box. Which can be locked for security

WARNING: Cancer and Reproductive Harm - www.P65Warnings.ca.gov

SGT81000 The Slugger, Heavy Duty Slide Hammer

- Perfectly designed for the toughest repair applications
- 10 lb. slide weight designed for in-line impact
- Balanced for continued use without fatigue
- Special hand-fit weight for ease of work
- Dual hammer action for reverse or direct reconstruction blows

WARNING: Cancer and Reproductive Harm - www.P65Warnings.ca.gov



SGT80000 Economy Slide Hammer Set

- A basic set for the most popular Slugger hooks supplied in a carton without board or metal box
- Allows the technician to get started with a quality set at a significant savings with the option of adding other parts in the future as desired

WARNING: Cancer and Reproductive Harm - www.P65Warnings.ca.gov

DRIVE SHAFT & AXLE

Slide Hammers & Pullers

OTC



OTC6540

8 Piece Rear Axle Bearing Puller Set

- Rear axle bearing puller fits min. bearing tube I.D. of 1" and max axle tube I.D. of 1-7/8"
- Rear axle bearing puller, fits min. bearing tube I.D. of 1-5/16" and max axle tube I.D. of 2-3/8"
- Rear axle bearing puller fits min. tube I.D. of 1-3/8" and max axle tube I.D. of 2-7/8"
- Slide hammer tee bar
- Slide hammer weight: 5 lbs
- Pulling hook
- Rear axle pulling plate
- Bearing cup remover

OTC



OTC7947

Eight-Way Slide Hammer Puller Set with Plastic Case

- Puller jaws can be set up for 2/3-way internal or external jobs
- Attachments include a dent puller, internal/external pulling jaws, puller hook attachment, rear axle pulling attachment, and a grip wrench adapter
- Comes neatly packaged in a handy plastic carrying case

Add a variety of puller attachments to a 5 lb. slide hammer puller and you get the capability to pull flange-type rear axles, stubborn oil seals and bearings, and other press-fit parts.



OTC7948

10-Way Slide Hammer Puller Set with Plastic Case

- Puller jaws can be set up for 10-way internal or external jobs
- Attachments include a dent puller, internal/external pulling jaws, puller hook attachment, rear axle pulling attachment, and a grip wrench adapter
- Comes neatly packaged in a handy plastic carrying case

Add a variety of puller attachments to a 5 lb. slide hammer puller and you get the capability to pull flange-type rear axles, stubborn oil seals and bearings, and other press-fit parts.



OTC4581

Stinger Slide Hammer Blind Hole Bearing Puller Set

- For pulling jobs requiring an internal pull, such as pilot bearings
- Set includes four collets which fit a wide range of applications
- Set includes a 2-1/2 lb. slide hammer with T-handle
- Housed in a blow-molded plastic storage case

Includes four collet sizes: 3/8" to 1/2", 9/16" to 11/16", 5/8" to 1", 1" to 1-1/4". When using select the appropriate sized collet by comparing it with the application. Insert the collet, expand it to fit the hole, then attach the slide hammer assembly. It's a great set and is easy to use!

DRIVE SHAFT & AXLE

Slide Hammers & Pullers



OTC4579

Stinger 9 Way Slide Hammer Puller Set

- Internal and External Jaws provide a variety of combinations to pull bearings, gears and seals
- Pulls Flange-type rear axle and most front wheel drive hubs
- Two and three-way cross blocks and cone provide perfect jaw configuration for many jobs

Includes: 2 way cross block, front hub puller, internal 3 jaw puller, external 3 jaw puller, rear axle puller, internal 2 jaw puller, grip wrench adapter, dent puller and puller hook. 5 lb. hammer in polished chrome finish in a blow molded case



vehicle | SPECIALTY



OTC1176

Reversible Jaw Slide Hammer Puller

- The basic slide hammer unit can be removed and used independently
- This puller with a 2-1/2 lb. hammer, 2-way and 3-way head is 27" in length
- The inside 2-jaw spreads 1-1/4" to 3-1/2" and the outside spreads 1" to 4-1/2"
- The inside 3-jaw spreads 1-1/2" to 4-1/4" and the outside spreads 1-1/2" to 4-1/2"
- Weight 8 lbs.

Here is an extremely versatile puller, which will accomplish many pulling jobs involving gears, bearings, outer races, grease retainers, oil seals, etc. Either two or three puller jaws may be used to handle "inside" pulling jobs such as bearing cups and outer races, as well as regular "outside" pulling jobs. It's a very dependable and versatile tool to have around.

WARNING: Cancer and Reproductive Harm - www.P65Warnings.ca.gov



OTC1173

Special Slide Hammer Puller

- Ideal for pulling jobs in very close quarters, as in removal of small-bore bushings, bearings, oil seals, etc.
- Internal pulling attachment has a jaw spread of 1/2" to 1-3/8", adjusted by turning the slide hammer handle
- Handle end has a 1/2"-20 thread

WARNING: Cancer and Reproductive Harm - www.P65Warnings.ca.gov

SUNEX[®] TOOLS



SUN3911

Slide Hammer Puller Set

- Jaws can be set up for 2 or 3 jaw internal or external pulling
- Included in a heavy-duty steel carrying case
- Two- and three-way cross blocks and cone provide the perfect jaw configuration for most jobs
- This professional slide hammer puller set eases removal of flange-type axles, oil seals, bearings and other press fit parts

DRIVE SHAFT & AXLE

Slide Hammers & Pullers



MLK433100 Suspension Master Kit

- Most complete Suspension Kit on the market
- To remove all components of the wheel knuckle
- Includes the Twin Cone Set, large Slide Hammer
- Neon color case



OTC7792 Slide Hammer Rear Axle Service Puller Set

- The tools you need for flange-type rear axle and bearing removal on most late model passenger cars and light trucks
- The axle bearing pullers, used with the slide hammer, make short work of removing semi-floating rear axle bearings

Consists of: No. 7374 - Rear axle pulling plate with 5 lb. slide hammer. No. 7495A - Rear axle bearing puller. Fits min. bearing tube I.D. of 1" and max. axle tube I.D. of 1-7/8". No. 7496A - Rear axle bearing puller. Fits min. bearing tube I.D. of 15/16" and max. axle tube I.D. of 2-3/8". No. 7497A - Rear axle bearing puller. Fits min. bearing tube I.D. of 1-3/8" and max. axle tube I.D. of 2-7/8". No. 27315 - Puller hook for use with the 5 lb. slide hammer.



OTC1178 Reversible Jaw Slide Hammer Puller Set

- This useful set contains OTC's popular No. 1176 reversible-jaw slide hammer puller, plus an assortment of special jaws and adapters.
- You get all the versatility of the No. 1176, plus attachments for pulling various size pilot bearings, oil seals, bushings, timing gears, harmonic balancers, and other lightly fitted parts!
- Weight: 10 lbs., 3 oz.



OTC1170 Pilot Bearing Puller with 3/4" Reach

- Built especially for inside pulling jobs, and particularly for removing flywheel pilot bearings on automobiles, trucks and tractors
- Also very practical for pulling motor, generator, and magnet bearings
- Reach: 3/4"; ID spread minimum: 1/2"; maximum: 1-1/2"



OTC1156 2-1/2 lb Slide Hammer Puller with Threaded End

- Length: 24"
- 5/8"-18 threaded end
- 2 1/2 lb. hammer
- Weight: 4 lbs. 12 oz.

This is a basic slide hammer, which may be used with an OTC internal pulling attachment or external-internal threaded adapters. This has a very sleek design, which helps grip and get the pulling job done.

DRIVE SHAFT & AXLE

Slide Hammers & Pullers



AST78415

Locking Pliers Slide Hammer Puller

- Lock onto nearly anything then operate 2.5lb slide hammer to pull
- Direction serrated teeth designed specifically for pulling
- Threads into most common locking pliers / Vice Grips for use with your existing tools as well

Universal puller for locking onto and hammering to remove everything from cotter pins to old seals and bushings. Quick detachable swivel end allows for adjusting and locking pliers on subject then attaching sliding hammer for removal. Threads into most common locking pliers / Vice Grips for use with your existing tools as well



OTC4534

Multipurpose Bearing and Pulley Puller Set

- 2 – Forcing Screws (Live Center): 3/4"-16 x 6-11/16" and 3/4"-16 x 5"
- 2 – Cross-bar Yokes: 3 pin-hole at 3-1/4" to 5-1/2", 2 pin-hole at 2-3/8" to 3-3/8" 2 – Clamp Bolts
- 3 Pairs of Puller Jaws: 1-3/8" Max, 1-5/8" Max, 1-3/4" Max
- 1 Pair of Jaw Pins with Ball Spring
- 3 Pairs of Capped Bolts
- Spread: 3" to 5", Reach: 1" to 2-1/4"
- Housed in a blow-molded plastic storage case

This multipurpose bearing and pulley puller set is for a wide range of pulling jobs, including: bearings, alternators, generators, power steering and crankshaft pulleys, timing gears, and harmonic balancers. This set includes drop-forged components, which can be used in a variety of combinations.



OTC4518

5 Ton Bar Style Puller Set

- Our two most popular bearing "splitters" (2" and 3")
- Four sets of hex push-puller legs
- A bar-type puller head with a 9/16" forcing screw
- Weight 10 lbs 8 oz

Separator tools are used with bar puller and legs for a wide variety of pulling jobs. The 5" puller cross-bar with a 6-1/4" forcing screw or each of the bearing separators may also be used separately or in combination with other pullers or tools. All included in a blow-molded plastic storage case which keeps the set contents organized and protected from loss.



MLK433414

Uni Drive-Shaft Pusher/Hub Puller

- Universal tool for pushing out bonded or corroded drive shafts
- "Vibro Impact" principle
- Suitable for almost all 4- and 5-hole wheels
- Damage to drive shaft thread is prevented
- Impact wrench not included!



TIG10102

Heavy Duty U-Joint Puller

- Fits spacer drive lines 1610, 1710, 1760, 1810, 1880, Meritor (Rockwell) 16N, 17N, 18N, 1710, Spicer SPL140, 170, 250, "Lifeseries" (virtually all class 7 and 8 trucks & machinery)
- Eliminates dangerous vice-and-socket or hammering methods
- Reduces the risk of damage to driveshaft, yokes, joints or bearing cups
- Engineered for use with a 1" impact tool

DRIVE SHAFT & AXLE

Slide Hammers & Pullers



OTC1183
Bearing Splitter Combo Set

- This combo pack contains four of OTC's most popular bearing splitters, plus a pulley pulling attachment. A rugged organizer case is included, enabling you to keep the tools together for instant use

Set includes: 1121 - bearing splitter; has 15/16" maximum spread and 1/4" minimum spread;
 1122 - bearing splitter; has 2" maximum spread and 1/8" minimum spread;
 1123 - bearing splitter; has 4-5/8" maximum spread and 1/2" minimum spread;
 1130 - bearing splitter; has 9" maximum spread and 1/2" minimum spread;
 679 - pulley pulling attachment with a 5-7/8" maximum and 1-3/4" minimum spread



OTC6602
Differential Bearing Preload Wrench

- Similar to Miller C-4164
- Tool fits inside axle tube to access the threaded adjusters
- Use to adjust differential bearing free play on Chrysler/Dodge vehicles with 7-1/4", 8-1/4", 8-3/4", and 9-1/4" rear axles



OTC7071
Differential Housing Spreader

- Eases the job of removing or installing differential ring-gear assemblies
- Works on Dana axle models 30 through 70
- Heavy-duty device using mechanical screw power to spread the housing
- Helps prevent the component damage that often results from the use of homemade devices



OTC205378
Single Lead Grip Wrench Adapter

- For grip wrenches using single-lead thread adjusting screw
- Adapter threads onto a slide hammer with a 5/8"-18 thread
- Grip wrench threads onto 7/16"-14 end of adapter for pulling use

OTC7318
Pilot Bearing Puller 1/2" to 1-1/2"

- Operates on many models with engine in chassis
- Designed to pull flywheel pilot bearings in close quarters where a slide hammer cannot be used



OTC464
2 Ton GripLock 2 or 3 Jaw Puller

- Configuration conversions take just seconds; no wrenches required
- 2 or 3 Jaw application, with a 4" maximum reach, 3" to 4" spread
- Both external and internal pulling action
- "Live center" action forcing screw
- Professional finish for long lasting durability



OTC465
5 Ton GripLock 2 or 3 Jaw Puller

- Configuration conversions take just seconds; no wrenches required
- 2 or 3 Jaw application, with a 7" maximum reach, 3" to 7" spread
- Both external and internal pulling action
- "Live center" action forcing screw
- Professional finish for long lasting durability



OTC1028
Differential Bearing Puller with 1-1/4" to 4-1/2" Spread

- This puller is used for removing differential side carrier bearings on a wide variety of passenger cars and light trucks
- Puller with 3-1/2" maximum reach, 1-1/4" to 4-1/2" spread
- This is primarily used for servicing Ford products

